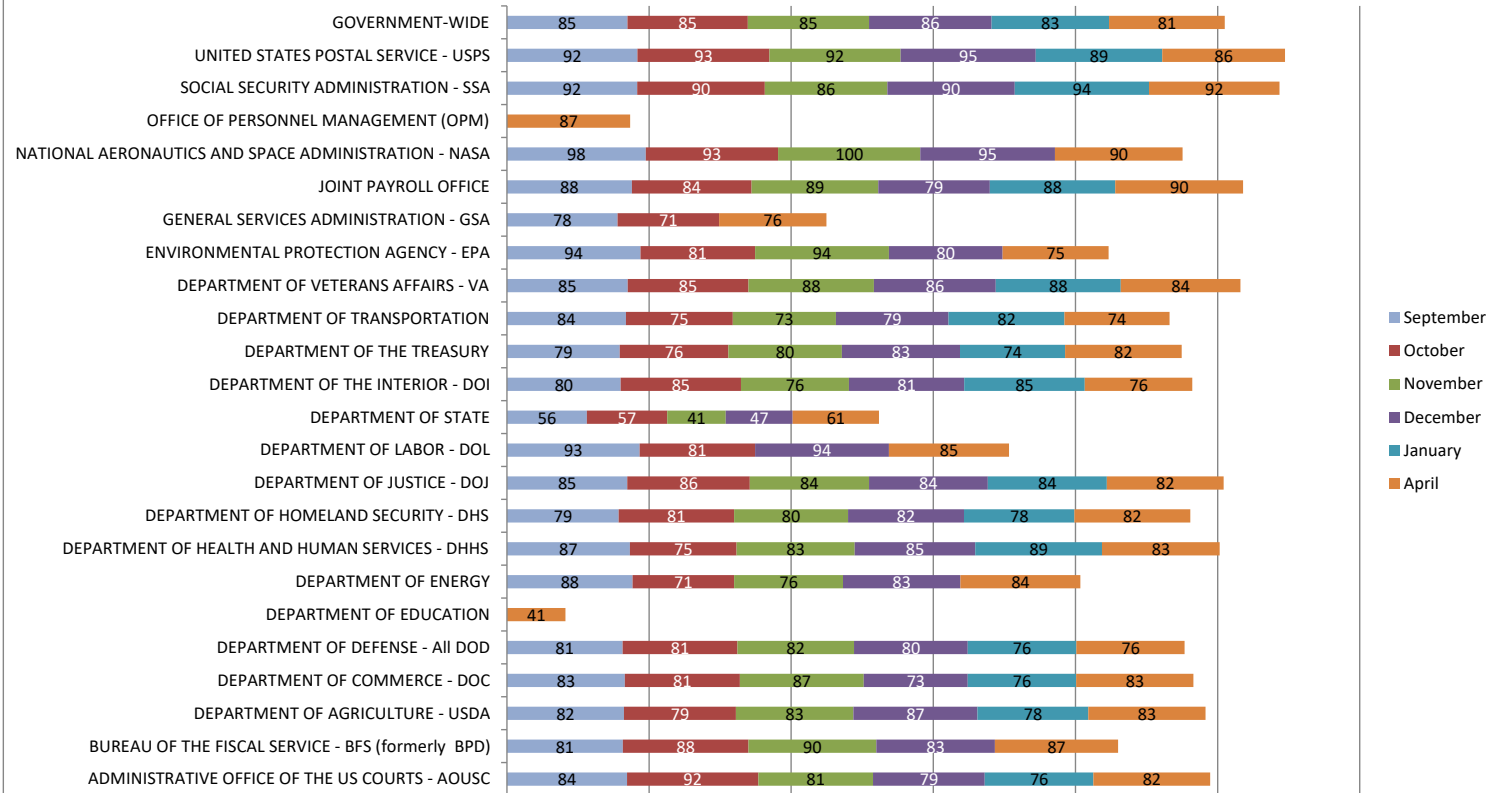


## Agency Retirement Case Accuracy Report



	September		October		November		December		January		April	
Agency	# of Cases	% of Healthy Cases	# of Cases	% of Healthy Cases	# of Cases	% of Healthy Cases	# of Cases	% of Healthy Cases	# of Cases	% of Healthy Cases	# of Cases	% of Healthy Cases
ADMINISTRATIVE OFFICE OF THE US COURTS - AOUSC	45	84	53	92	67	81	61	79	34	76	67	82
BUREAU OF THE FISCAL SERVICE - BFS (formerly BPD)	27	81	26	88	20	90	30	83			30	87
DEPARTMENT OF AGRICULTURE - USDA	159	82	164	79	87	83	133	87	91	78	223	83
DEPARTMENT OF COMMERCE - DOC	88	83	68	81	47	87	56	73	42	76	109	83
DEPARTMENT OF DEFENSE - All DOD	1,316	81	1,615	81	1,369	82	1,170	80	834	76	1,328	76
DEPARTMENT OF EDUCATION											17	41
DEPARTMENT OF ENERGY	26	88	28	71	17	76	29	83			32	84
DEPARTMENT OF HEALTH AND HUMAN SERVICES - DHHS	119	87	88	75	136	83	79	85	56	89	191	83
DEPARTMENT OF HOMELAND SECURITY - DHS	253	79	313	81	262	80	207	82	188	78	444	82
DEPARTMENT OF JUSTICE - DOJ	144	85	281	86	248	84	189	84	111	84	297	82
DEPARTMENT OF LABOR - DOL	30	93	16	81			17	94			39	85
DEPARTMENT OF STATE	16	56	23	57	17	41	17	47			28	61
DEPARTMENT OF THE INTERIOR - DOI	110	80	111	85	100	76	100	81	66	85	144	76
DEPARTMENT OF THE TREASURY	203	79	170	76	149	80	196	83	88	74	289	82
DEPARTMENT OF TRANSPORTATION	104	84	93	75	91	73	53	79	38	82	111	74
DEPARTMENT OF VETERANS AFFAIRS - VA	629	85	648	85	657	88	569	86	455	88	681	84
ENVIRONMENTAL PROTECTION AGENCY - EPA	33	94	31	81	17	94	20	80			59	75
GENERAL SERVICES ADMINISTRATION - GSA	18	78	21	71							41	76
JOINT PAYROLL OFFICE	66	88	51	84	64	89	56	79	34	88	79	90
NATIONAL AERONAUTICS AND SPACE ADMINISTRATION - NASA	44	98	29	93	18	100	19	95			39	90
OFFICE OF PERSONNEL MANAGEMENT (OPM)											15	87
SOCIAL SECURITY ADMINISTRATION - SSA	95	92	79	90	65	86	68	90	36	94	110	92
UNITED STATES POSTAL SERVICE - USPS	1,030	92	1,622	93	1,427	92	1,420	95	887	89	1,279	86
<b>GOVERNMENT-WIDE</b>	<b>4,662</b>	<b>85</b>	<b>5,670</b>	<b>85</b>	<b>4,956</b>	<b>85</b>	<b>4,595</b>	<b>86</b>	<b>3,078</b>	<b>83</b>	<b>5,801</b>	<b>81</b>

\*\*The table above shows the retirement application accuracy rates for agencies with at least 15 cases reviewed for the month indicated. The table shows the number of cases for the agency and the accuracy percentage of cases reviewed.

\*\*\*Effective November 2024, the "Agency Audit Report" is renamed the "Agency Retirement Case Accuracy Report." This name change, agreed upon in collaboration with our agency partners, is a direct result of an OPM Inspector General recommendation received in November 2023.