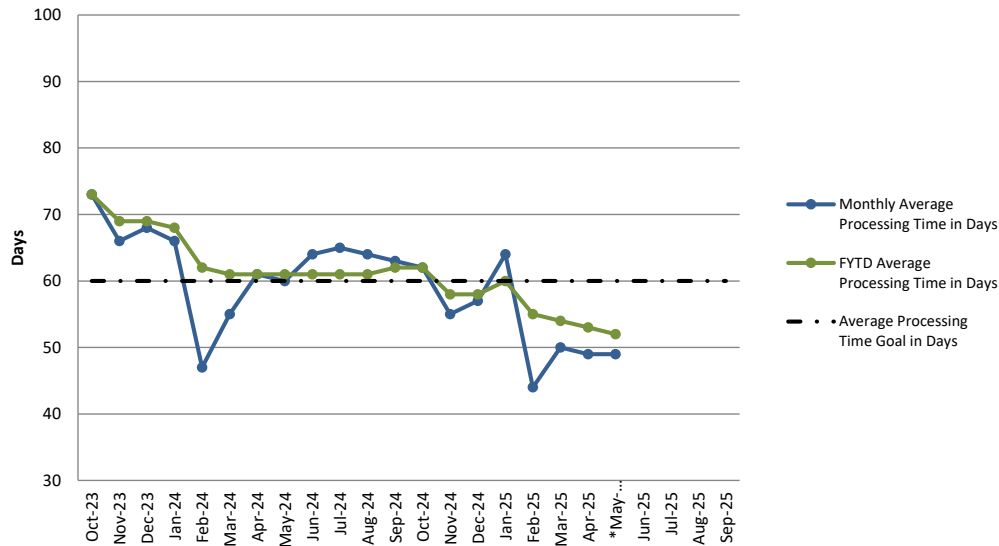


CSRS/FERS New Claims Processing Time



Month	Claims Received	Claims Processed	Inventory (Steady state goal is 13,000)	Monthly Average Processing Time in Days	FYTD Average Processing Time in Days
Oct-23	6,924	6,098	16,678	73	73
Nov-23	5,207	6,059	15,826	66	69
Dec-23	5,662	7,196	14,292	68	69
Jan-24	12,997	6,467	20,822	66	68
Feb-24	8,794	10,025	19,591	47	62
Mar-24	7,943	10,711	16,823	55	61
Apr-24	6,901	7,647	16,077	61	61
May-24	6,751	8,793	14,035	60	61
Jun-24	6,919	5,614	15,340	64	61
Jul-24	6,451	5,994	15,797	65	61
Aug-24	7,083	7,702	15,178	64	61
Sep-24	5,618	6,302	14,494	63	62
Oct-24	6,872	6,458	14,908	62	62
Nov-24	6,808	7,872	13,844	55	58
Dec-24	5,020	4,988	13,876	57	58
Jan-25	16,101	6,700	23,277	64	60
Feb-25	9,637	12,364	20,550	44	55
Mar-25	7,803	11,559	16,794	50	54
Apr-25	8,332	8,953	16,173	49	53
*May-25	15,048	9,739	21,483	49	52
Jun-25					
Jul-25					
Aug-25					
Sep-25					

Disability determinations are included in the pending number after approval. Average Processing Time in Days represents the number of days starting when OPM receives the retirement application through final adjudication.

*Initial retirement cases produced in less than 60 days, on average took 30 days to complete; whereas cases that were produced in more than 60 days, on average, took 110 days to complete.